

PROJECTINA

ULTRA.

# INSPEC 6

THE COMPACT MULTI-FUNCTIONAL WORKSTATION FOR DOCUMENT VERIFICATION



FOR **EASY**  
DOCUMENT  
EXAMINATION

- › Border control / immigration services
- › Customs authorities
- › Financial institutions
- › Forensic laboratories

# SYSTEM SPECIFICATIONS

Desktop document verification unit with 12V external power supply

Maximum document size: 210 x 300 mm (A4 format)

External 10x LED magnifier with dedicated power supply, equipped with incident and oblique white light  
Dim: 72 x 50 x 50 mm

Compatible with universal digital camera adapter (adapter and camera not included)

8 integrated illumination systems:

- **White transmitted light (LED)**  
for identification of water marks, mechanical erasures, safeguarding threads
- **UV LED / 313 / 254 nm**  
Fluorescent lamps 2x6W and 1x6W each, with safety features for UV 254/313 nm, for identification of authenticity of paper, chemical erasures, fibres and security marks
- **White top light (LED)**  
for printing techniques, OVD, OVI verification
- **White oblique light (LED)**  
5W LED with condenser for identification of mechanical erasures, embossed stamps, exchange of photographs
- **Handheld high intensity white spotlight**  
flexible verification of ID documents in side light or transmitted light, strong light output, flexible hand held light source
- **Vertical surface light (Retro) (LED)**  
Light source with deflection mirror (RETRO mirror), for identification of retro-reflective security marks



UV 254nm



UV 313nm



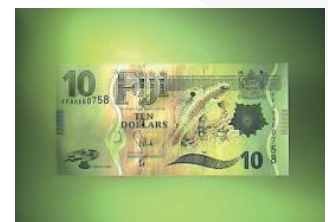
UV 365nm



White top light



White transmitted light

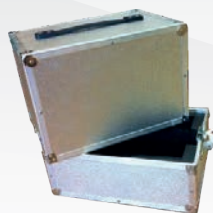


White oblique light

## OPTIONS



Universal digital camera adapter  
(Camera not included)



Carrying case for basic system

## TECHNICAL SPECIFICATIONS

Dimensions	380 x 260 x 210 mm (W x D x H)
Weight	approx. 6 kg
Input power	100-240V / 50-60Hz
Power consumption	30W
Operation conditions	5 - 40°C

We reserve the right to make modifications as a result of technical developments. Illustrations, descriptions and extent of delivery are therefore not binding.