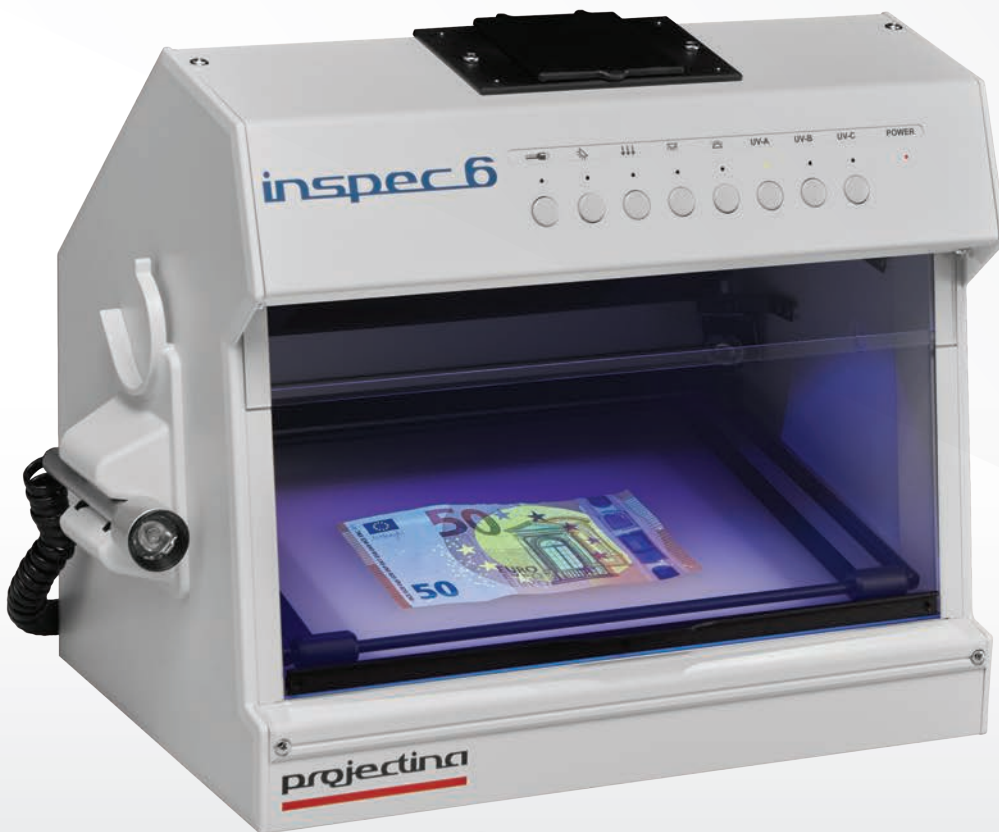


PROJECTINA

ULTRA.

INSPEC 6

THE COMPACT MULTI-FUNCTIONAL WORKSTATION FOR DOCUMENT VERIFICATION



FOR **EASY**
DOCUMENT
EXAMINATION

- › Border control / immigration services
- › Customs authorities
- › Financial institutions
- › Forensic laboratories

SYSTEM SPECIFICATIONS

Desktop document verification unit with 12V external power supply

Maximum document size: 210 x 300 mm (A4 format)

External 10x LED magnifier with dedicated power supply, equipped with incident and oblique white light
Dim: 72 x 50 x 50 mm

Compatible with universal digital camera adapter (adapter and camera not included)

8 integrated illumination systems:

- **White transmitted light (LED)**
for identification of water marks, mechanical erasures, safeguarding threads
- **UV LED / 313 / 254 nm**
Fluorescent lamps 2x6W and 1x6W each, with safety features for UV 254/313 nm, for identification of authenticity of paper, chemical erasures, fibres and security marks
- **White top light (LED)**
for printing techniques, OVD, OVI verification
- **White oblique light (LED)**
5W LED with condenser for identification of mechanical erasures, embossed stamps, exchange of photographs
- **Handheld high intensity white spotlight**
flexible verification of ID documents in side light or transmitted light, strong light output, flexible hand held light source
- **Vertical surface light (Retro) (LED)**
Light source with deflection mirror (RETRO mirror), for identification of retro-reflective security marks



UV 254nm



UV 313nm



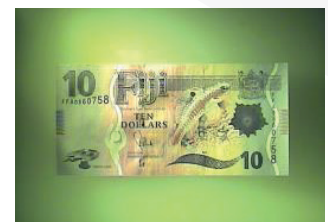
UV 365nm



White top light



White transmitted light

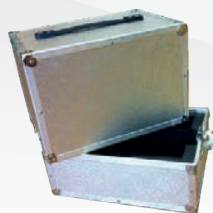


White oblique light

OPTIONS



Universal digital camera adapter
(Camera not included)



Carrying case for basic system

TECHNICAL SPECIFICATIONS

Dimensions	380 x 260 x 210 mm (W x D x H)
Weight	approx. 6 kg
Input power	100-240V / 50-60Hz
Power consumption	30W
Operation conditions	5 - 40°C

We reserve the right to make modifications as a result of technical developments. Illustrations, descriptions and extent of delivery are therefore not binding.